

"TECHNICALLY SPEAKING"...

Walls: made of reinforced concrete (5000psi)
Foundation: pre-cast grade-beams and floor slabs with "Waffle Crete Panels"
Roof: steel rafters, purlin and aluzinc sheeting.
Electrical: installed inside walls.

Lotification



Super-structures come with lifetime warranty!!

Cocoa Grande
"home sweet home"

Cocoa Grande
"home sweet home"

A charming new place to live in the east...

We trust that this package of information has been helpful in guiding you towards taking your next step in acquiring your own home. We understand that this involves much thinking and consultation and would like to extend an invitation to you to come and view our model homes and speak with us. Please feel free to contact us at the under-mentioned numbers.



Doc's Homes Ltd.

Phoenix Park West Road,
Point Lisas
Trinidad W. I.

Tel: (868) 662 4775 or 636-1858/2526/3627

Fax: (868) 679-2974

E-mail: docsgroup@docseng.com

Website: www.docseng.net



684-3300 / 787-9631

At Doc's we are proud to build homes to fit hardworking families like yours. Our goal is to help you get the home of your dreams.

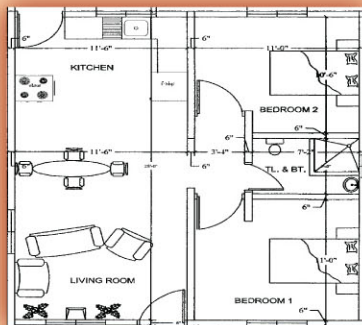
The warmth and tranquility of the east is harnessed at Cocoa Grande. Located in the popular town of Sangre Grande where cocoa plantations originally flourished and sustained this once sleepy town. Situated on Foster Rd, a stone's throw away from the Police Station, marketplace, bank and just mere kilometers from Manzanilla beach.

We Offer You Choices

2 bedrooms, 1 bathroom (684 sq ft)



Comes with: Kitchen-cabinets, all electrical, plumbing and fixtures, ceramic tiles, gypsum ceiling, steel encased burglar proofing on windows & entrance doors, hardwood panel doors (internal).
OPTIONAL: A/C, furniture & appliances, garage, porch.



3 bedrooms, 2 bathroom (880 sq ft)

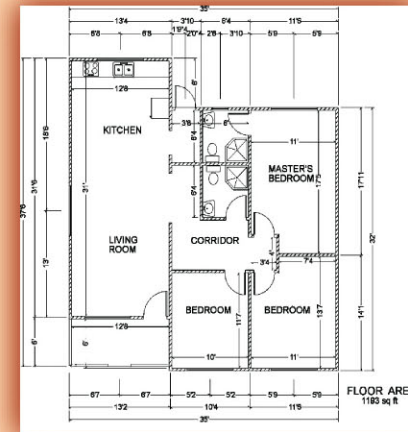


NOTE: 2 & 3 bedroom houses may appear similar but may vary in size and floor-plan.

Comes with: Kitchen cabinets, all electrical, plumbing and fixtures, ceramic tiles, gypsum ceiling, steel encased burglar proofing on windows & entrance doors, hardwood panel doors (internal).
OPTIONAL: A/C, furniture & appliances, garage, porch.



3 bedrooms, 2 bathrooms (1193 sq ft)



Comes with: A/C, Kitchen cabinets, cupboard in master bedroom, all electrical, plumbing & fixtures, porcelain tiles, gypsum ceiling, steel encased burglar proofing on windows and entrance doors (internal).
OPTIONAL: furniture & appliances, garage, porch.

Ask about on the spot, in-house financing !